

# INDUSTRIAL DEPOT

FASTENERS, HARDWARE & SHOP SUPPLIES

## OVER 800,000 ITEMS

STANDARD PARTS,  
VENDOR MANAGED INVENTORY,  
CUSTOM PARTS, &  
CONTRACT PACKAGING

LEAN MANUFACTURING SUPPORT  
ON YOUR PARTS, COMPONENTS &  
CONSUMABLE ITEMS  
SERVICE SINCE 1973



The New Industrial  
Vending Systems



Consumable Cabinets  
Control Cost & Reduce Freight



[sales@theindustrialdepot.com](mailto:sales@theindustrialdepot.com) 678.904.5000

[www.TheIndustrialDepot.com](http://www.TheIndustrialDepot.com)



# INDUSTRIAL DEPOT

FASTENERS, HARDWARE & SHOP SUPPLIES

Astro Bolt & Nut  
3305 Cook Drive • Gainesville, GA 30507

[theindustrialdepot.com](http://theindustrialdepot.com)  
[sales@theindustrialdepot.com](mailto:sales@theindustrialdepot.com)

678.904.5000 FAX 678.904.5001

## BOLTS

Hex Head Grade 2, 5, 8  
and L-9  
B-7 Bolts  
Carriage Bolts  
Elevator Bolts  
Flange Bolts  
Lag Bolts  
Plow Bolts  
Square Head Bolts  
Structural Bolts  
Tension Control Bolts  
Tap Bolts

## FITTINGS

Brass Fittings  
Hose Clamps  
Valves  
Nipples & Fittings  
Hydraulic Adapters  
Grease Fittings  
Black & Galvanized  
Copper Fittings  
Plastic Fittings  
Quick Disconnects  
Thumb Screws

## SCREWS

Drill & Tap  
Deep Thread  
Drywall  
Flooring  
Machine  
Sealing  
Sheet Metal  
Tamper Proof  
Roofing  
Thread Cutting  
U-Bolts

## METRICS

Bolts  
Nuts  
Machine Screws  
Socket Products  
Washers  
Specials  
Rod  
Pins



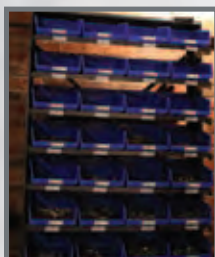
Vendor Managed Inventory

## NON-FERROUS FASTENERS

Stainless Steel  
Brass  
Silicon Bronze  
Monel  
Nylon  
Aluminum

## SOCKET PRODUCTS

Allen Hex Keys  
Socket Screws  
Shoulder Bolts  
Pipe Plug  
Shaft Collar  
Patched  
Pellet  
Specials



Stocking Work Cells  
Lean Manufacturing Support

## CONCRETE ANCHORS

Bent Anchor  
Drive Anchor  
Drop In  
Lead Anchor  
Sleeve Anchors  
Stud Anchors  
Tapcons

## STRUT & PIPE HANGERS

Bases  
Brackets  
Channel  
Clamps  
Hangemate  
Caddy Clamps  
Sammy Super Screws

## CUTTING TOOLS

Annular Cutters  
Burs  
Countersinks  
Drill Bits  
End Mills  
Taper Shank  
Masonry Bits  
Reamers  
Taps & Dies  
Abrasives

## NUTS

Hex & Jam  
Heavy Hex  
Coupling Nuts  
Flange Nuts  
Kep Nuts  
Locking Nuts  
Slotted & Castle Nuts  
Pal Nuts  
Tee Nuts

## HARDWARE

Locks  
Butt Hinges  
Drawer Slides  
Knobs

## WASHERS

Belleville  
Bevel  
Bonded Sealing  
Fender  
Finishing  
Flat (USS, SAE)  
Load Indicator  
Machinery Bushing  
Hardened  
Split Lock  
Tooth Lock

## ROD

Acme  
B-7  
B-7 Studs  
Drill Rod  
Key Stock  
Round Stock

## MISCELLANEOUS

Storage Bins  
Cable Ties  
Continuous Hinge  
Tape  
O-Rings  
Woodruff Keys

## RIVETS

Blind  
Rivet Nuts  
Poly Nuts  
Solid Rivets  
Semi Tubular  
Nut Inserts

## PINS & WIRE PRODUCTS

Cotter Pins  
Spring Pins  
Coiled Spring Pins  
Dowel Pins  
Clevis Pins  
Three Point Pins  
Wire Forms

***Industrial Depot can cross reference part numbers  
and Give Cost Savings on Shop Supplies!***

Fasteners, Adhesives, Hardware, Material Handling, Electrical Products, Tools, Janitorial Supplies,  
Cutting Tools, Abrasives, Safety Supplies, Fittings, Hose, Marking & Labels, Raw Material,  
Bearings, Machinery, Fluids & Lubricants, Welding & Soldering, Measuring Instruments



# INDUSTRIAL DEPOT

FASTENERS, HARDWARE & SHOP SUPPLIES

Astro Bolt & Nut  
3305 Cook Drive • Gainesville, GA 30507

[theindustrialdepot.com](http://theindustrialdepot.com)  
[sales@theindustrialdepot.com](mailto:sales@theindustrialdepot.com)

678.904.5000 FAX 678.904.5001

## INDUSTRIAL SHOP SUPPLIES

### MANUFACTURER LISTING

3M Abrasive  
3M Electrical  
3M Industrial  
3M OH&ESD  
Acco Chain  
Adjustable Clamps  
Adjustable Hand Tools  
Advance(Now pferd)  
Aearo  
Aervoe  
Alemite  
Allegro  
Allen Tools  
Alpha Weld  
Alta  
American Allsafe  
American Lock  
American Seal  
Ametek, U.S. Gauge  
Ampco  
Anchor  
Anderson Brush  
Ansell  
Apex Fastener Tools (Cooper)  
Arc/Plazcraft  
Armstrong Tools  
Arrow  
Associated Equipment  
Atlas  
Atlas Copco Construc-tion  
Bagby  
Baldor  
Band-It  
Bar's Leaks  
Belchfire  
Bernzomatic  
Big Beam  
Binks –  
(ITW Industrial Finishing)  
Bio Systems  
Bitumastic  
BLACKHAWK  
Blaster  
Blitz Inc  
Bondhus  
Bondo/MAR-HYDE Corporation  
Bosch  
Boss Gloves  
Bostitch  
Bouton  
Brady  
Bright Star  
Brown & Sharpe  
BSM Pumps  
Buck Knives  
Burrell (4-B's)  
Cable Ties  
Cargo Chemical

Carica  
CCL  
Cerro  
CGW  
CH Hanson  
Champion  
Channellock  
Chapin  
Chicago Hardware  
Chicago Pneumatic  
Chip Brushes  
Clarke  
CLC(Custom Leather Crafts)  
CM Hoist (Columbus McKinnon)  
Coffing  
Coilhose Pneumatics  
Coleman Cable  
Comeaux Caps  
Conbraco  
Contour Sales  
Cooper Tools Master Power  
Cooper Wiring Devices  
Cooper-CAMPBELL  
Cooper-Crescent  
Cooper-GETA  
Cooper-H.K. Porter  
Cooper-LUFKIN  
Cooper-NICHOLSON  
Cooper-PLUMB  
Cooper-UTICA  
Cooper-WELLER  
Cooper-WISS  
Cooper-XCELITE  
Cordobond  
Cox Reels  
CRC  
Crews  
Croakies  
Crown  
CS Osborne  
DBI/Sala  
Delta Building Trade  
Delta Consolidated  
Delta Industrial Machinery  
Desa  
Deuer/Mini-Mule  
Devcon  
DeVilbiss – (ITW Industrial  
Finishings)  
DeWalt  
Dixon Graphite –  
(Cummings Moore)  
Dixon Ticonderoga  
Dixon Valve  
DMT  
Donegan Optical  
Dremel  
Drill Doctor

Drivecon  
Duracell  
Dutton-Lainson  
Dykem/Dymon  
Dynabrade Air Tools  
Dyna-Flux  
Eagle Manufacturing  
E-A-R  
Ekco  
Ekland  
Elk River  
Empire Level  
Enerpac  
Ergodyne  
Ericson  
Estwing Hammers  
Eureka Chemical Co.  
Exhaust Caps  
EZ Roll Casters  
Fend.All  
Fill-Rite/Tuthill  
Fiskars  
Flame Engineering –  
(Red Dragon)  
Flange Wizard  
Freud  
Freund  
Fuller's Earth/Humco  
FUTUREGUARD  
G.C. Fuller  
Gage Glass  
Gardner Bender  
Garland  
Garlock  
GASBOY  
Gatorade  
Gearench  
General Tools  
General Wire  
Gentec Genstar Technologies  
Gerber  
Geronimo  
Gerson  
Gilmour Group  
Gleason –  
(Milwaukee Hand Trucks)  
GoJo  
Goldblatt  
Goldenrod  
Goss  
Greenlee  
Guardair  
Guardian Equipment  
Gunnebo-Johnson  
HARLEY DAVIDSON  
Harper  
Harris Flux

Heat Fence  
Hi-Lift Jacks (Bloomfield)  
Hilman Rollers  
Hitachi  
Hobart  
HOME SAFEGUARD  
Howard Leight  
HUBCO INC.  
Hudson Sprayers  
Humco  
Huntsman  
Ice Pick/Vivian of St. Louis  
ICE SCRAPERS  
Ideal Corporation  
Ideal Industries  
Ideal Reel  
Igloo  
Imperial Schrade  
Imperial Tool (Stride Tool)  
Industrial Electric Reel (Insul 8)  
Ingersoll-Rand  
Intertape Polymer Group  
Ironclad  
Irwin DuraBull  
Irwin Hanson  
Irwin Industrial Tools  
Irwin Marathon  
Irwin Quick-Grip  
Irwin Sharpie  
Irwin Speedbor  
Irwin Straight-line  
Irwin tool  
Irwin Unibit  
Irwin Vise-Grip  
Jackson  
Jackson Professional Tools –  
(Formerly Ames)  
Jacobs  
JB Weld  
Jessup  
Jet Equipment and Tools  
Jet-Lube  
Joe's Hand Cleaner  
Justrite  
Manufacturers  
Justrite (HAZMAT)  
K & K  
Keeper Corporation  
Kennametal – (Formerly  
Greenfield Sawing)  
Kennedy  
Kidde Safety  
Kimberly-Clark  
King Tool  
Klein  
Knipex

Continued on back

[theindustrialdepot.com](http://theindustrialdepot.com)



# INDUSTRIAL DEPOT

FASTENERS, HARDWARE & SHOP SUPPLIES

Astro Bolt & Nut  
3305 Cook Drive • Gainesville, GA 30507

[theindustrialdepot.com](http://theindustrialdepot.com)  
[sales@theindustrialdepot.com](mailto:sales@theindustrialdepot.com)

678.904.5000 FAX 678.904.5001

## INDUSTRIAL SHOP SUPPLIES

### MANUFACTURER LISTING

Kolor Kut  
Komelon  
Krylon  
Lakeland  
LAMBA  
LAPCO  
Leatherman  
Leetonia  
Lenco  
Lenox  
Lewis Belts  
Liftex  
Lincoln Industrial  
Linkbelt/Rexnord  
Linzer  
Littelfuse  
Little Joe  
Loctite  
Louisville Ladder  
LPS/TapMatic  
Lubriplate  
Lug-All  
Lutz  
Maasdam  
Mag-Lite  
Magnaflux  
Magnet Source  
Magnolia Brush  
Makita  
MAPA Professional  
Markal  
Marshalltown Trowel  
Marson Creative Fastener Inc.  
Martin Hand Tools  
Marvel Oil  
Master Appliance  
Master Lock  
Master/Desa Heaters  
Master/HONDA  
Masterkit  
Mayhew  
Mean Green  
Mechanix Wear  
Memphis Glove  
Merit Abrasives  
Metabo  
Metals  
Meter-man  
Micro-MIST  
Midland Forge-CM  
Miller Safety Equipment  
Milwaukee Brush (Now Pferd)  
Milwaukee Electric  
Milwaukee Sprayer (Sure Shot)  
MINI-MULE  
Mitutoyo

Moldex  
Morse Company, M.K.  
Morse-Starrett  
Motor Guard  
Motorola  
MSA  
Mystik  
Nashua (Tyco Adhesives)  
National (Tyco Adhesives)  
National Banner Co.  
National Trucks  
Neese-Rainwear  
Neill tools (Strongridge Limited)  
Nets (Barbour Threads. Inc.)  
Never-Seez  
Nissen  
Norcross  
North Safety Products  
Norton Abrasives  
Notrax  
Manufacturers  
Nupla  
Oetiker  
Olympia –  
(See Adjustable Hand Tools)  
Optrel  
Optronics  
Pac-Kit  
Pelican  
Perfect Fit  
Peterson Fluxes  
Pferd  
Phoenix  
Plastomer Products  
Plews/Stant Tru-Flate  
Plymouth  
Polyken (Tyco Adhesives)  
Polyken (Tyco Adhesives)  
Pop Rivet  
Porter Cable  
Power Sentry  
Precision Brand  
Presco  
Procter & Gamble  
Proflex  
Proto  
PT Products  
Pyroil  
QC 21 Sling Manufacturing  
Radiator Specialty  
RAGS  
Ray-O-Vac  
Ready Welder  
Recoil  
Rectorseal  
Red Devil

Regal  
Relton Rapid Tap  
Remgrit  
Resinet  
Ridgid Tool  
Rod Guard/Safe  
RotoZip  
RUBBER STRAPS  
Rubbermaid  
Rubbermaid Home PRODUCTS  
Manufacturers  
Rubberstet  
Rule Group  
Rust-Oleum  
S.K. ENTERPRISES  
SAFETAP  
Safety Pins  
Saf-T-Cart  
Samson  
Sanford  
SC Johnson  
Schrade (Imperial)  
Select Industries  
SFA companies  
Shaffer  
Shamrock Specialties  
ShopVac  
Shurtape  
Simer Pumps  
Simple Green  
Simplex(Templeton Kenly)  
Sioux  
Sipco  
Sisal Rope  
SK Hand Tools  
Skil  
Snoop  
Sog  
Solo  
Southern Glove  
Spatz Paint  
SPC  
Sphag Sorb  
Spiralcoo  
Sprayon  
Sprayon  
Sqwincher  
Stanley  
Stanley Bostitch  
Stanley Tools for the Mechanic  
Starrett L.S.  
Stitt  
Stone Tools  
Strapbinder  
Streamlight  
Sumner

Superal  
Superlube  
SUPREME  
Survivair  
Swan  
Swanson Tools  
Sylvania Tungsten  
Syracuse  
T.P.I.  
Tap Magic  
Telpro  
Tempil  
Tesa Tape  
Thermal Dynamics  
Thermoid,HBD  
TruWeld  
Tuthill/Fill-Rite  
Tweco  
Ullman  
Unibor  
Union Tools  
US Tape  
USA Products  
Uvex  
Vaughan  
Victor  
Warp Brothers  
Waterloo  
Watson  
WD-40  
Weiler Brush  
Wej-It Fastening Systems  
Weksler Pressure Gauges  
Weld-Aid  
Weldcraft  
Wellington  
Wells Lamont  
Western Enter-prises  
Western Hard Hat  
Wheeler Rex  
Wiha  
Willson  
Wilson  
Wilton Tools  
Woodhead, Daniel  
Woods Wire  
Worthington  
Wrap-On  
Wright Hand Tools  
Wyeth-Scott  
Wypo  
Yamaha  
York





Astro Bolt & Nut  
3305 Cook Drive • Gainesville, GA 30507

[theindustrialdepot.com](http://theindustrialdepot.com)  
[sales@theindustrialdepot.com](mailto:sales@theindustrialdepot.com)

678.904.5000 FAX 678.904.5001

## OUR EQUIPMENT INCLUDES THE FOLLOWING:



- Thread Rolling Machine
- EDM Machine
- Vibratory Finisher
- In House Heat Treating
- Contract Packaging & Welding
- Full Metal Quality Control
- Drill Sharpener
- Surface Grinder



- Milling Machine
- Drill Press
- Band Saw
- Lathes
- Circular Cold Saw with 4" dia.
- CNCHorizontal Machining Center
- CNC Vertical Machining Center
- CNC Turning Center
- CNC Knee Mills

*The Industrial Depot has been helping provide engineering and design support since 1973, by assisting customers in reaching their vision through building customer parts and component design needs*

[theindustrialdepot.com](http://theindustrialdepot.com)



# INDUSTRIAL DEPOT

FASTENERS, HARDWARE & SHOP SUPPLIES

Astro Bolt & Nut  
3305 Cook Drive • Gainesville, GA 30507

**theindustrialdepot.com**  
**sales@theindustrialdepot.com**

**678.904.5000    FAX 678.904.5001**



The Industrial Depot has been in the business of supplying quality products to our customers since 1973. Our craftsmen are capable of helping you design a solution for your special component needs.

We offer a wide range of products and materials: Turning Centers, Machining Centers, Electrical Discharge Machining, Bar Bending, Fabrication and Welding, Threading and Waterjet Cutting. Our specialization includes custom products in low to medium production quantities.

Dedication to attention to detail and on-time delivery has provided an opportunity for The Industrial Depot to develop long standing relationships with every company we work with.

## CNC MACHINES

CNC machinery, like this Haas ES-5-TR, allows for tight tolerances that meet any Quality Control standards.



*theindustrialdepot.com*



# INDUSTRIAL DEPOT

FASTENERS, HARDWARE & SHOP SUPPLIES



## LET US QUOTE YOUR CONTRACT PACKAGING & KITTING REQUIREMENTS

**The Industrial Depot  
can deliver SMALL  
VOLUMES – TO TRUCK  
LOADS – per week**

Boxes, Poly Bags, Wood Boxes,  
Crates, Shrink Wrap, Labels,  
Bar Coding, Hardware Bins, &  
Special Contract Packaging.

Kitting can save you time and  
money by replacing the many  
parts you manage with one  
simple kit.

[theindustrialdepot.com](http://theindustrialdepot.com)





The Industrial Depot Presents

# The LC Line Of Keepers

**Lower-Cost Keepers for managing supplies that don't need insulation.**

- These non-insulated *Keepers* are just right for tracking workplace supplies.
- Just like the original *Keepers*, these valuable machines reduce manufacturing costs by increasing manufacturing efficiency.
- Supplies are now safe, secured, and their use is fully accounted for.
- The *Keeper* Care System is asset management software.
- Computer-generated reports keep you fully informed.
- So if your supplies don't need insulated protection, purchase a Cheeper *Keeper*!

**Keeper-LC39**



Standard 39" width  
72" tall, 35" deep

**Keeper-LC28**



28-1/2" wide  
72" tall 29-1/2" deep

## INDUSTRIAL DEPOT

FASTENERS, HARDWARE & SHOP SUPPLIES

The Industrial Depot  
3305 Cook Drive, Gainesville GA 30507  
Phone: 678.904.5000  
Fax: 678.904.5001  
Toll Free: 866.729.9925

**theIndustrialDepot.com**

sales@theIndustrialDepot.com



# INDUSTRIAL DEPOT

FASTENERS, HARDWARE & SHOP SUPPLIES

## This is the fully-insulated Keeper offering more protection

- With the same Keeper Care System which stands guard over your workplace-supply inventory to ensure efficient use of items and to give advance notice of low inventories.
- The Keeper Care System uses keypad, magnetic card, or bar code technology so supplies are vended directly to the worker who needs them.
- Up to sixty selections in the standard configuration
- Like all Keepers, its mobility allows point-of-use location.



The **Drawer Keeper** is built to manage larger items such as tools and safety equipment including gloves. Stores and dispenses supplies for electricians, welders and many others.



- Sturdy modular construction.
- Dividers in drawers create size options.
- Compatible with other Keepers.
- With a stand-alone control box it can be used as a stand-alone unit.

## The Keeper Mini-tray

AIS offers this small-item tray to store and dispense items such as earplugs, small battery-packs, and other small packages. The trays are made up of small racks which come in various shapes and sizes: 32, 20, and 10 count pitch.



**Machines Starting at \$7000 and Locker Cabinets Starting at \$1000**

**Please ask how you can get this FOR FREE!**

theindustrialdepot.com



# INDUSTRIAL DEPOT

FASTENERS, HARDWARE & SHOP SUPPLIES



AS SEEN ON  
**OVERHAULIN'**

## BOLT BINS, HARDWARE CARTS & TOOL CRIB MANAGEMENT

*The Industrial Depot offers vendor managed  
inventory systems*



### ▶ Fasteners & Bins Ready to Ship

We have over 800 Standard Fasteners & Hardware Bins ready to ship. We can also custom build any kind of bin and work cell station. Contract packaging is also available.



### ▶ Material Management

Your account manager will create an ergonomic work cell environment for employees that results in maximum efficiency of your work area. To do this, your account manager will first evaluate how product is moved into and out of your work area and identify the requirements to complete work within the area. Then adjusted "min/max" quantities, based on your product usage, will be integrated into the work cell environment.

### ▶ Bin Stock

The Industrial Depot personnel will work with you to organize and maintain your work cell area(s). Through bar coding technology, your account manager will help to establish "min/max" quantities for your work cell. The Industrial Depot will monitor and restock the cells to maintain your desired inventory levels.

### ▶ Production Line Stocking

Your account manager will create an ergonomic work cell environment for employees that results in maximum efficiency of your work area. To do this, your account manager will first evaluate how product is moved into and out of your work area and identify the requirements to complete work within the area. Then adjusted "min/max" quantities, based on your product usage, will be integrated into the work cell environment.



### ▶ In Plant Location

The distribution process is made possible by The Industrial Depot personnel. These individuals receive, package, and distribute product on a daily basis. The Industrial Depot is able to implement supply chain solutions to best meet the needs of our wide range of customers by providing in plant services. Customizing the needs of each customer streamlines the distribution process, resulting in a reduction of waste and cost for your company.

### ▶ Vending Machine

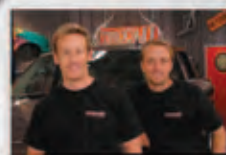
The Industrial Depot Presents the LC Line of Keepers. Lower-Cost Keepers for managing supplies that don't need insulation. These valuable machines reduce manufacturing costs by increasing manufacturing efficiency. Supplies are now safe, secured and their use is fully accounted for. Computer-generated reports keep you fully informed.

theindustrialdepot.com



# INDUSTRIAL DEPOT

FASTENERS, HARDWARE & SHOP SUPPLIES



**What better way to drive quality control and research and development than to push our products to the Xtreme?** Here at The Industrial Depot, we use every resource possible to ensure our products meet your needs, as well as our own. Keep an eye out for us on these TV shows and on the track where our products are being tested and used.



[theindustrialdepot.com](http://theindustrialdepot.com)

THE INDUSTRIAL DEPOT...YOUR OFFICIAL HARDWARE SOURCE





# INDUSTRIAL DEPOT

FASTENERS, HARDWARE & SHOP SUPPLIES

LET US QUOTE YOUR STANDARD HARDWARE  
AND SPECIAL COMPONENTS NEEDS

Service  
Since 1973

Bolts & Nuts

Fasteners

Hardware

Rivets

Screws

Metric Fasteners

Cable Tie

Cutting Tools

Abrasives

Pin Wire & Products

Concrete Anchors

Construction Fasteners

Strut & Pipe Hangers

Fittings & Hose

Material Handling

Storage Bins

Casters

Safety

Electrical Wire

Shop Supplies



## SERVICES

Package Division

Manufacturing Service

Lean Manufacturing  
Support



**INDUSTRIAL DEPOT**  
**YOUR OFFICIAL HARDWARE SOURCE**

678.904.5000 Phone  
678.904.5001 Fax  
866.729.9925 Toll Free

